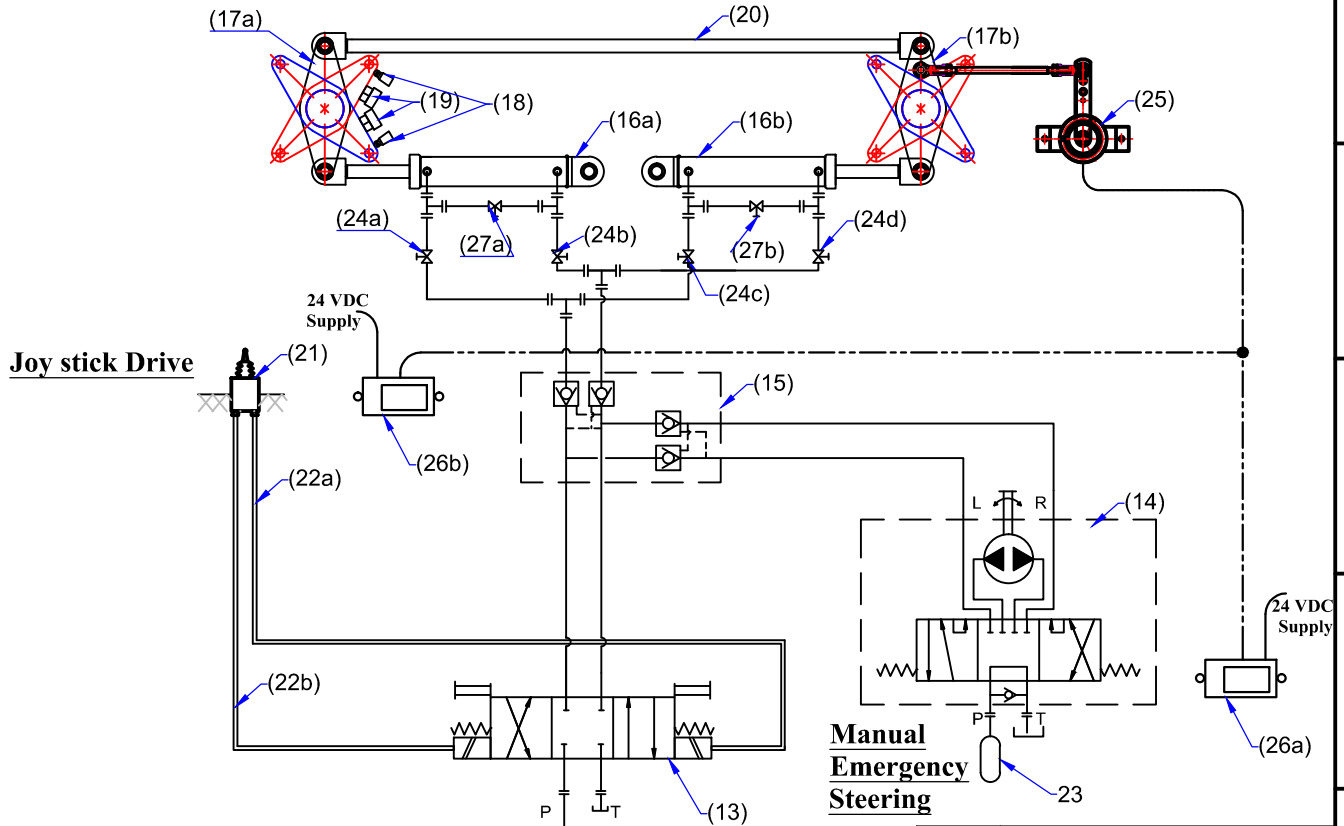
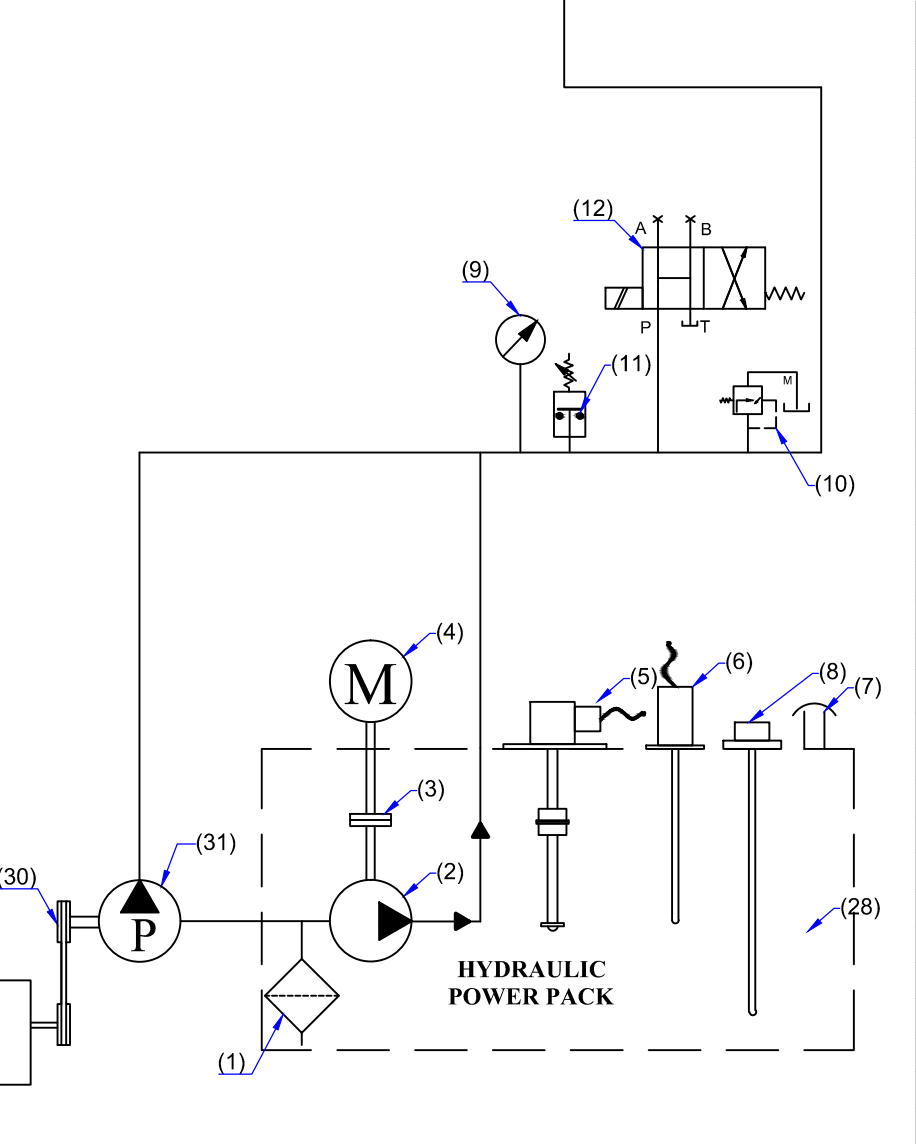


# Electro-Hyd. Circuit - JumboZ-2800



SI No.	Description
1	Suction Strainer
2	Hydraulic pump
3	Flexible Coupling
4	Electric Motor
5	Oil Level Sensor
6	Oil Temp. Sensor
7	Filler Breather
8	Oil Dip Stick
9	Pressure Gauge
10	Pr. Relief Valve
11	Pre. Switch. Low Pre. Alarm
12	Unloading Valve
13	Sol. Ope. Directional Valve
14	Emergency Manual Helm Pump
15	Pilot Operated Double Check Valve
16a, 16b	Hyd. Actuator - JumboZ 2800 IRS
17a, 17b	Tiller Arm
18	Limit Switch
19	Mechanical Stopper- (Yard Supply)
20	Connection Rod- (Yard Supply)
21	Joy Stick
22a, 22b	Ele. Line to Sol. Ope. Valve
23	Oil Reservoir
24a, 24b, 24c, 24d	Isolation Valve
25	Rudder Angle Sensor
26a, 26b	Rudder Angle Indicator
27a, 27b	By Pass Valve
28	Powerpack Tank - 80 Ltr Capacity
29	Engine
30	PTO Pulley
31	Hyd. Pump



**MAC ♦ N ♦ HOM SYSTEMS**  
**KOCHI - 20**

**DESIGNATION**  
Electro-Hydro. Circuit of JumboZ-2800  
with Emergency Steering

**DWG. No.**  
MHS-1291

**DATE**  
19.10.2021

